

MATHS

- Fractions, Decimals and Percentages
- Shape
- Area and Perimeter
- Shape

We will also focus on arithmetic and mathematical skills needed for the KS2 SATs papers in May.

Children will be welcome to be in the classroom from 8:20 Tuesday, Wednesday and Thursday to log on to extra IXL practice to support their maths learning.

Selected children will also be invited to after school booster sessions to address any gaps or inconsistencies in knowledge.

ENGLISH

We will continue to write for different purposes using high quality texts to support our ideas and processes.

We will also be focusing on our grammar knowledge ready for the Key Stage 2 SAT's papers in May.



Selected children will also be invited to after school booster sessions to address any gaps or inconsistencies in knowledge.

Y6 Topic Web Summer Term

TOPIC ~ Wish you were here... (Geography)

- Why is the Lake District a National Park?
- North and South America - how diverse are their places and landscapes?

SCIENCE ~

- Plants and classification - What do we know about plants and how scientists classify them?
- Sustainability - What can we do to look after our own environment?

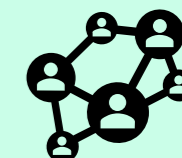
COMPUTING

- Computing systems and networks - communication
- Data - Spread sheets



PSHE

- Being my best
- Growing and changing

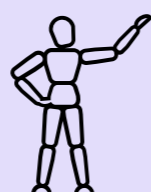


RE

- For Christians, what kind of king is Jesus? (Kingdom of God)
- Why do some people believe in God and some not? How does faith help people when life gets hard? (Thematic)

ART ~ working in three dimension / DT ~ food

- Telling stories through drawing and making
- French food



FRENCH

- A l'ecole - the school



MUSIC

- Samba
-
- Composing and performing a leavers' song

